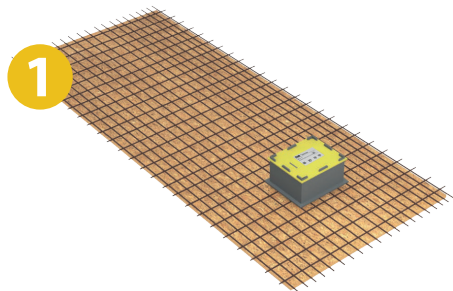
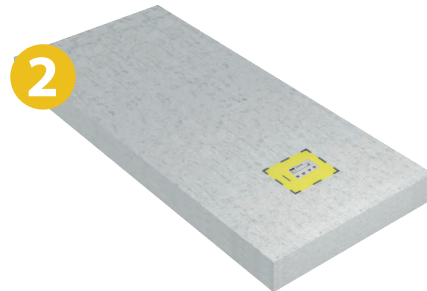


RÉZABOITE CV

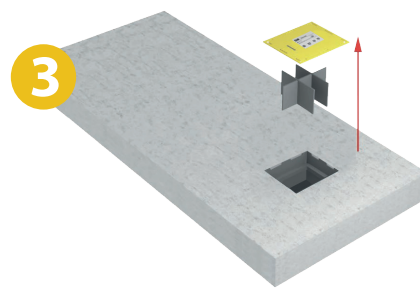
KEYSTONE BOX-OUT MODULE



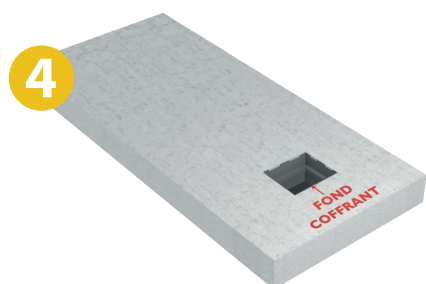
1 Cut away the rebars to position the box-out opening. Fit and lash the RÉZABOITE CV into place over the formwork base.



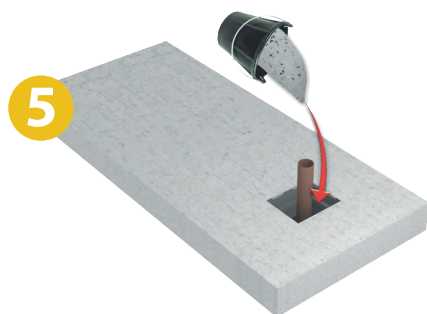
2 Pour concrete around the RÉZABOITE CV.



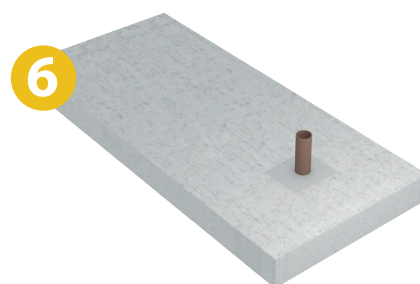
3 Remove the RÉZABOITE CV top-cover and strengtheners.



4 The formwork base is side-anchored by the concrete to keep it held firmly in place.



5 Cut away the formwork base to the requisite duct diameter using a hole saw/jig saw. Run the service duct/pipe through the penetration.



6 Fill in directly no further formwork needed.



ENVIRONMENTALLY CONSCIOUS

100%-recyclable polypropylene
Incinerates without giving off noxious fumes and burns without residue

ARTWORK AND DESIGN BY MEDIA LABELLE

RÉZABOITE CV®

BOX-OUT MODULE

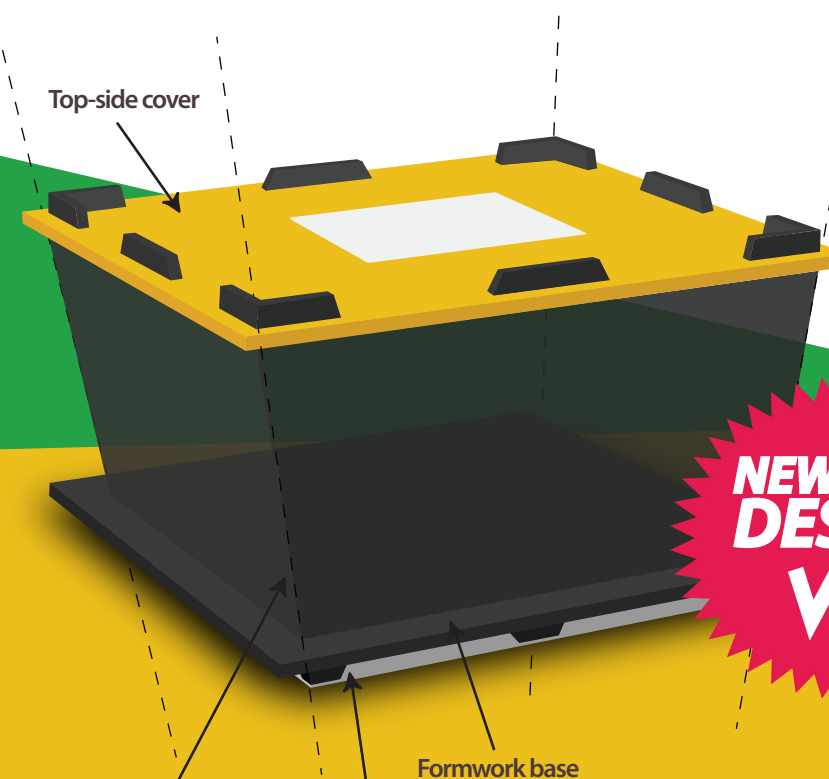
BOX-OUT FORMWORK WITH FORMWORK BASE SYSTEM TO RUN THROUGH IN-SLAB SERVICE DUCTS/PIPE.

Formwork base side-anchored in the concrete, enabling on-the-spot box-out fill-in.



FEATURES & ADVANTAGES

- Delivered ready-to-fit
- Lightweight, easy-to-handle
- Quick to install
- Resists concrete pressure
- Firestop concept tested and certified
- Resists foot traffic by construction workers
- Fall-arrest system (big box-out cavities)
- The V-shaped design means no formwork removal needed



NEW DESIGN
V SHAPE

AKYBOARD®

Built entirely in AKYBOARD® an innovative advanced performance material: 100% recyclable, waterproof, pressure resistant, and outstandingly workable.

The foam seal protects the formwork base

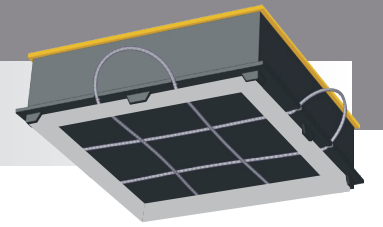
The new V-shaped design anchors the box-out module in-slab

UNE QUESTION ?
04 73 78 57 41

RÉZABOITE CV

KEYSTONE BOX-OUT MODULE

FORMWORK BASE SAFETY CABLES



As long as the product stays in its original as-delivered configuration, it is perfectly safe for site-worker walk-over. Any use for other purposes must first be subject to a special case engineering study.

The top-cover and internal bracers are removed while other building services work is going on. The box-out opening should thus be protected until it gets filled in.

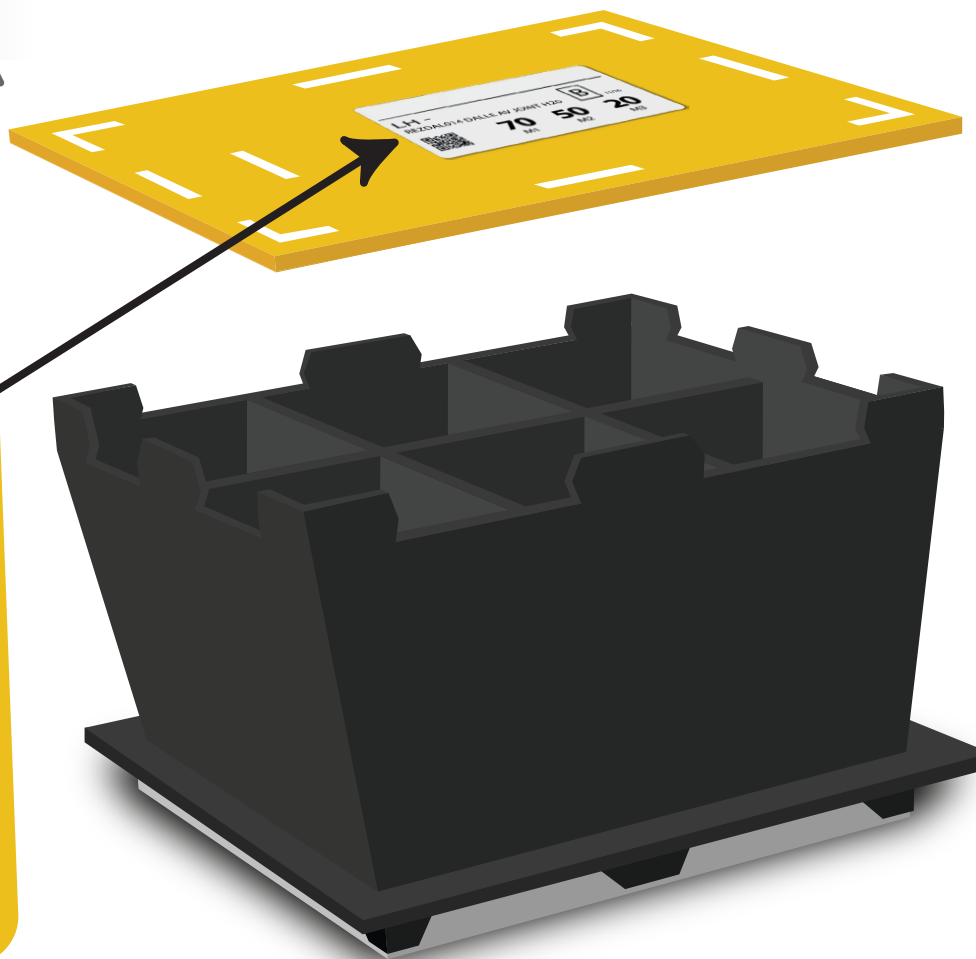
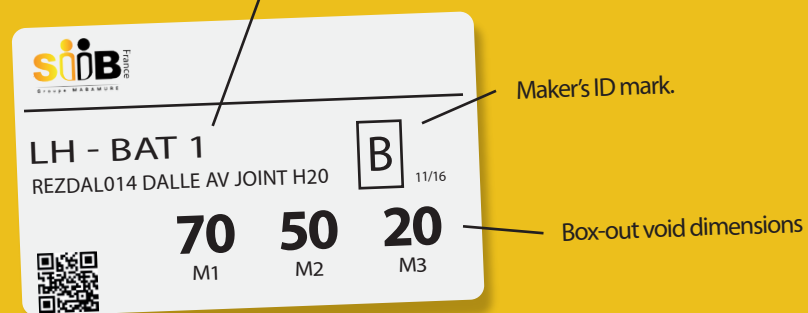
- Installed on all box-outs bigger than 50x50cm
- Fall-arrest system tested by BUREAU VÉRITAS inspectors (Certificate No. 6044860-I/NINYSWU)
- An added safety net against site workers falling through the box-out.
- Dynamic load-tested system (stops a 100 kg falling mass dropped from 1 and 2 metres)

MACHINED-TO-MEASURE

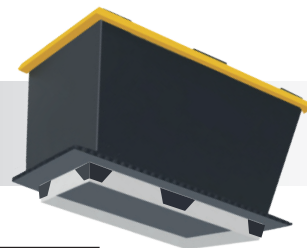


The RÉZABOITE CV is machined-to-measure to meet your construction-site constraints, so it adapts to give you the best solutions.

ID TAG

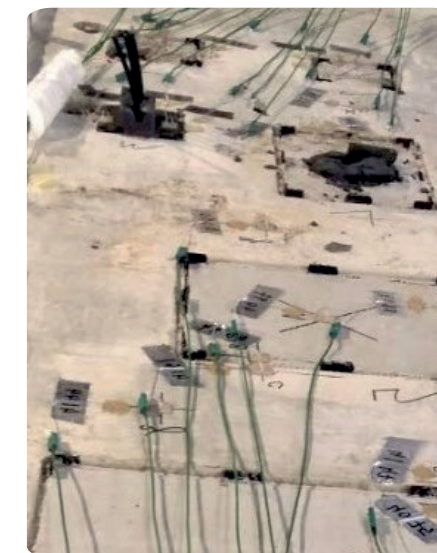


FOAM SEAL



- Stops concrete laitance getting under the formwork base
- No need for cleaning before penetrating the formwork base
- Easier run-through of service ducts/pipes

TEST REPORTS



CERIB fire-resistance rating test procedure
6 REZA FIRESTOPS with thermocouples in C35/45-grade fiber-reinforced concrete 180mm-thick

CERIB FIRE RESISTANCE RATING TEST

RÉZABOITE CV successfully passed the CERIB (accredited national fire-resistance testing lab) fire performance tests. It meets the current European fire resistance standard :

- Test standard EN 1366-3
- Maintains fire integrity and insulation for at least 2 hours :
Fire resistance class EI 120

STATIC AND DYNAMIC LOAD-TESTING (BY BUREAU VÉRITAS INSPECTORS)

The tests prove that RÉZABOITE CV offers static load resistance up to at least 700kg. The tests were completed with different box-out sizes and at different stages of concrete curing (early-age and 30-day set).

The tests prove that RÉZABOITE CV with formwork base safety cables stops a 100 kg falling mass dropped from 1 and 2 metres. The tests were completed with different box-out sizes and with two different safety-cable systems.

RÉZABOITE CV

KEYSTONE BOX-OUT MODULE

SPEED RANGE

ITEM NAME	mm	cm		
	Diam.	Length	Width	Height
20AA CV SLAB JOINT		15	15	20
20BB CV SLAB JOINT		20	20	20
23BB CV SLAB JOINT		20	20	23
25BB CV SLAB JOINT		20	20	25
20CC CV SLAB JOINT		25	25	20
20DB CV SLAB JOINT		30	20	20
20DD CV SLAB JOINT		30	30	20
20FB CV SLAB JOINT		40	20	20
20FF CV SLAB JOINT		40	40	20
20HH CV SLAB JOINT+CABLE		50	50	20
20JJ CV SLAB JOINT+CABLE		60	60	20
CIRCULAR SLAB Ø125 HT200	125			20
CIRCULAR SLAB Ø140 HT200	140			20
CIRCULAR SLAB Ø160 HT200	160			20
CIRCULAR SLAB Ø200 HT200	200			20

Delivery
within 96h*

* Shipped within 48h guaranteed+ courier-service transport

